


A decorative pink graphic consisting of a large, thin, curved line on the left side and a vertical line with a four-pointed starburst shape at the bottom center, intersecting the main text.

COMPANY

PROFILE

TABLE OF CONTENTS

<u>Content</u>	<u>PAGE NO.</u>
Company Details	3
Introduction	4
Objective	6
Goal	6
Mission	6
Vision	6
Engineering Division	7
Major Product Range & Services	12
Our Valued List of Clients	24



COMPANY DETAILS

Company Name: Glead Trading & Contracting W.L.L

Establishment: 2019

Company Location : Doha - Qatar

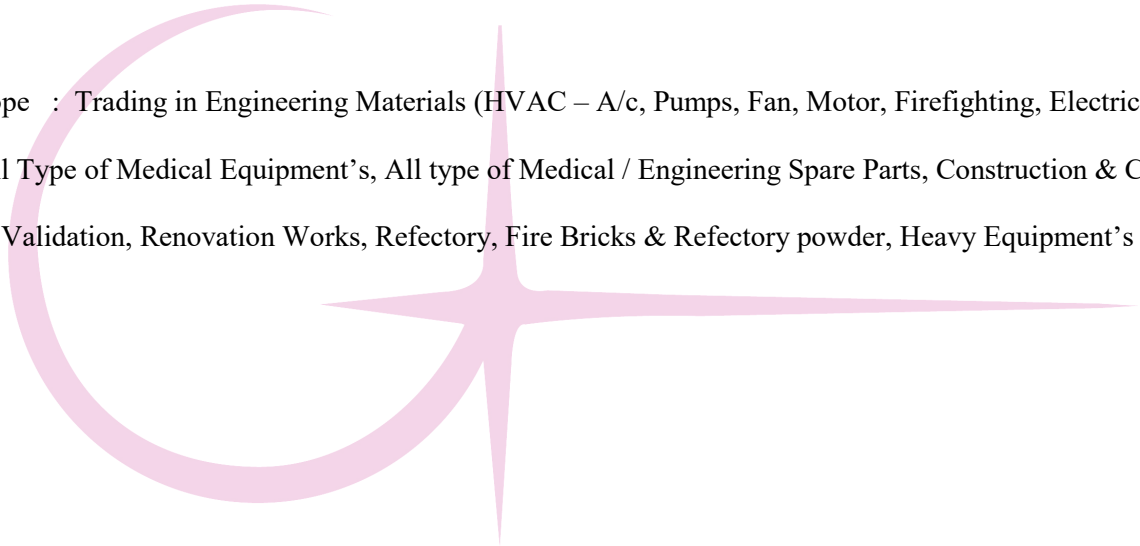
Company Contacts : +974 5038 0462

Fax : +974 4469 9868

Email : info@gleamtradeco.com

Web site : www.gleadtradeco.com

Business Scope : Trading in Engineering Materials (HVAC – A/c, Pumps, Fan, Motor, Firefighting, Electrical), Building Materials, All Type of Medical Equipment's, All type of Medical / Engineering Spare Parts, Construction & Contracting, Clean Room Validation, Renovation Works, Refectory, Fire Bricks & Refectory powder, Heavy Equipment's



INTRODUCTION

GLEAM was established and registered in 2019 with its main office located in Doha - Qatar

GLEAM has accumulated a strong and healthy market trust through a simple principle that we follow:

Earn Trust with Business

GLEAM is among the leading distributors of Electrical, Mechanical and Hardware products

GLEAM has been providing support and services to all major industries, contractors and traders in the region

Company Facility

we have extensive authority to Design, Supply and Install and Commission the Health Care equipment's and distributor of well-known products in the market. Our market-leading products includes all Health Care

Continue being a leading provider of healthcare and technical professional in all markets we serve and to thereby improve the quality of health care for patients throughout the country

Sales & Service

Gleam Sales team actively involve with project from the beginning of its plan and supporting in Design, Drafting, Estimation, Project Management, Execution and Successful Handing over through our entire team.



Design & Estimation

Gleam provides Design and Estimate the Health Care requirement based on British Standard (HTM), American Standard (NFPA) and ISO, EN Standards etc.



Project Management

Gleam With our years of experience in Health Care projects in different parts of the world with world renowned consultants, can manage the project's cost effectively and within the specified time frame.



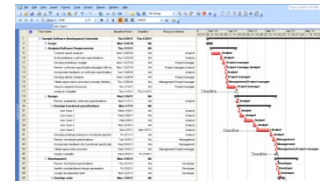
Auto CAD Facility

Gleam has in house Auto CAD draught team to make the drawings, this enables us to make the project drawings and as-built drawings on time



Project Execution

Gleam has Well Experienced and Certified Project Managers, Project Engineers, Supervisors, Skilled Technicians, Certified in Authorized Person n, Competent Person & Project Management Planning Team.



OUR OBJECTIVE

Our objective is to become one of the leading market share holder in one of the most competitive market in the world.

Our Goal

Customer satisfaction is the ultimate goal of our company.

Mission Statement

We are committed to provide our products at the right time at the right place with zero tolerance.

Vision Statement

To be referred as the most favorable company in the electrical, mechanical and hardware trading industry.

Gleam Trading & Contracting Wll. MEP division is a specialist engineering works undertaking the design, engineering, supply, installation, commissioning and maintenance of mechanical, electrical and plumbing services for commercial, residential and infrastructure projects.

With an experienced team of leaders, managers supported by highly qualified and experienced engineers and technicians, the MEP division has the ability to handle even the most demanding of mechanical, air conditioning, electrical, plumbing and fire protection projects, which requires on time delivery of quality products.

1. Commercial Application

1. Unitary air conditioning products Window
2. Decorative Split
3. Wall
4. Ceiling
5. Cassette
6. Ducted
7. Roof top package
8. VRF systems



2. Special Applications

1. Chilled water and district cooling applications
 - Air handling units
 - Fresh air handling units
 - Ducted and decorative fan coil units
 - DX Fresh Air and
 - Recirculating Air Handling unit



3. High end air distribution systems

- Ceiling air outlets
- Sidewall air outlets
- Floor air outlets
- Chilled beams

4. Precision control applications

- DX close control units
- Chilled water close control units
- Dual coil close control units



5. Sustainable air conditioning green building solution systems

6. Highly energy efficient variable refrigerant flow (VRF) systems with environmentally friendly gas and inverter technology

7. Highly energy efficient wall, ducted, ceiling, cassette – DX split systems with environmentally friendly gas and inverter technology

8. **Construction Industry**

1. Villas / Villa complexes
2. Hospitality
3. Healthcare facilities
4. Educational facilities
5. Exhibition centers
9. buildings

6. Manufacturing facilities
7. Data and Centre
8. Residential and commercial

Warranty services and maintenance contracts for all air conditioning products and projects are undertaken by us in-house facilities management team and Tec serve, backed by a large fleet of fully equipped mobile service vehicles to help cater to customers' warranty and after sales service needs through a dedicated 24 hour call center.

FIRE FIGHTING SERVICING & MANPOWER SUPPLYING



Our expertise lies in deploying fire & safety manpower, Maintenance of fire equipment & supply of fire tender with crew during Commissioning plants. Today, our consistent service approach in this field as well as capability to meet up to the service standard demands of our customers have helped us in gaining a strong foothold in this sector. Further, our capabilities to deliver prompt Fire Fighting Assistance at competitive prices.

SAFETY MANPOWER SUPPLY, RECRUITMENT & EMPLOYMENT SERVICES FOR PRE & POST CONSTRUCTION SITES:



We offer a range of services to meet the needs of our clients in line with the ever changing landscape of compliance in the region.

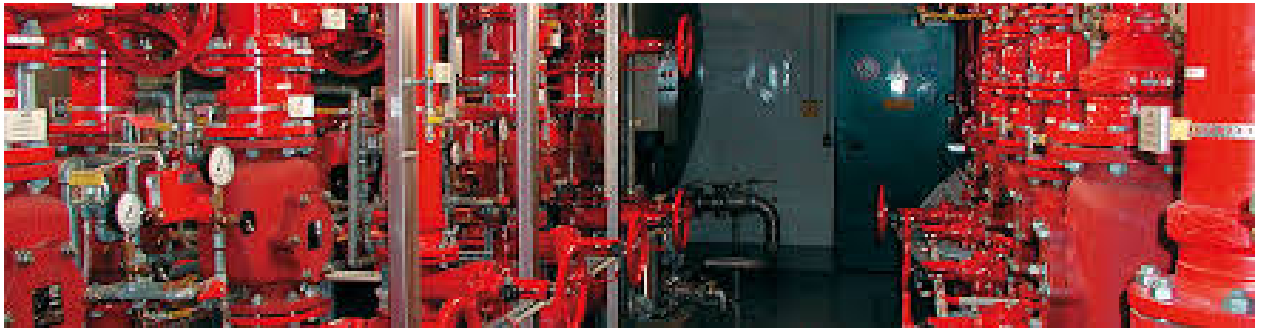
Our recruitment team has access to a rapidly expanding database of locally and regionally available candidates of all disciplines and skill sets.

MANPOWER SUPPLY:

- We also have with us rich industry experience in successfully handling the services related to Fire Fighting Man Power Supplies. Here, we have successfully supplied qualified as well as experienced fire personnel for manning major industrial giants

ASSISTANCE IN PLANT COMMISSIONING

- We provide expertise services in Assistance in Plant Commissioning to our clients. We have rich experience in this field and have a valuable client.



FIRE EQUIPMENT MAINTENANCE & REFILLING

- Our expertise also lies in successfully handling the service demands of providing maintenance & refilling services of all fire equipment's. Here, we have with us experience of successfully carrying out similar jobs at many reputed establishments including

FABRICATION OF NEW FIRE TENDER

- We have also developed the capability in the field of different types of fire tender fabrication at our workshop. We have all facility to carry out technical activities in fabrication of any modern fire tender at our workshop which is exclusively developed for these specialized jobs.



We support clients who operate in the General Construction, Fire, Oil & Gas, Process and Petrochemical industries, Energy, Water and Waste, Infrastructure, hospitality, (road and rail). We have specialist recruiters for all disciplines in addition to supporting Commercial, HSE and Quality Assurance departments.



We have extensive experience in the following fields of activity we organize both local and international recruitment campaigns for clients wishing to hire specific numbers of personnel. We have successfully carried out campaigns in the India as well as in Europe and Asia. We provide a complete service including the sourcing of candidates and venue arrangements. A project team supports the campaign to ensure smooth operation and successful completion

OTHER SERVICES:

- Many of our clients require short term personnel on a call off basis. We can provide a tailored service to meet client needs and ensure complete compliance. These contracts generally support commission & start up teams, inspection and NDT activities and ad hoc specialist personnel.

Trading of Medical Equipment's

Gleam Trading & Contracting W.L.L is a leading medical and laboratory equipment's supplier in Qatar. We are a well-established, financially stable company currently one of the biggest companies dealing with medical supplies in Qatar. We provide complete analytical solutions and our dedicated team of highly qualified professionals undertakes complete turnkey projects. We are proud to count some of the most esteemed organizations and leading industries in Qatar as our clients.

Company Overview

- **Ceiling Suspended System:** Medical supply unit delivers a degree of versatility that can enhance work place efficiency to support clinical processes in any Health Care area.
- The ceiling suspended unit can be equipped with movable trolleys that rotate 360° and move along the profile with a limitation in order not to interfere with the bed. As braking system for rotation and translation movement, it is used a mechanical one with manual activation.
- **Pendant System:** Monitoring and infusion trolleys can be equipped with accessories such as technical rails, shelves, drawers, vertical poles, infusion stands and others. All this equipment turn the unit versatile for the different configurations required depending of the unit needs.



- **Bed Head Units:** Aluminum profile with 3 compartments, for direct light and mechanisms, medical gases and indirect light. Internal access to the unit is performed through clipped covers, which allows easy access and the possibility to expand or reduce unit equipment easily.
- Two decorative stripes along the unit act as provision for technical rails to be fixed in the profile above and below medical gases cover. Any medical gas standard can be installed in the unit.
- Gleam specializes in the large areas of Hospital and Laboratory projects. Design, construct, refurbish and equip Operating Rooms and departments, Clean Rooms, Laboratories, ICU Departments and Central Sterile Supply Departments (CSSD).
- Ultra Clean Canopies (UCV), Specialist Clean Room Doors, Furniture, Lights, Pendants, Bed head trucking and other Medical Equipment.
- Gleam brings together the expertise gained over many years of the supply and installation of ‘turn-key’ clinical departments.
- With over years of experience working for the Healthcare sector, in design, supply and installation of medical systems gained from the construction of over many Operating Theatres worldwide, Gleam has a wealth of knowledge to draw on.



Gleam offers a full design, installation and maintenance service for all Medical and Laboratory gas pipeline systems. The experience of our team and knowledge of the relevant standards.

- Not only in the design of pipeline systems, but also complete engineering systems for operating theatres and clean rooms, enable us to work with the project design team to provide the optimum solutions
- Gleam offer a wide range of Operating Theatre & Clean Room wall systems, from Modular wall construction to traditional plasterboard with a variety of claddings, to meet all client specifications and budgets.

Architectural Systems

- **Surgeon Control Panel:** Security and reliability of product installed inside an operating room were main premises considered while designing operating room control panels and it is digital control panel consisting of a computer and a touch screen managed by a PLC. Integrates all controls. Signals and alarms of the operation theatre and offers several services addressed to maintenance staff.
- **Operating Lights:** In the operating room, the right illumination is essential for success. The all new surgical illumination LED systems provide cool light with natural colors and rich-contrast for thousands of hours of carefree operation without straining on your hospital's budget. Without light, surgery just isn't possible. Sufficient light is one of the fundamental requirements for the operating room



➤ **UPS & IPS Systems:** Electric switchboard for clinical use, designed to supply power to operating theatres or high electrical risk units. The safety equipment power for these areas varies in accordance with composition needs of each unit. For operating theatres, power ranges, both for single-phase or three-phase networks.



➤ **Pressure & Temperature Systems:** Pressure Monitor is designed to measure the pressure differential in hospital rooms verifying the proper operation of your HVAC system to help you maintain patient safety. System will activate audible and visual alarms. If the pressure differential is too great, too small, or the wrong direction.

➤ Temperature and humidity measurement is essential to taking control of your environment. Grainger has a large variety of humidity testing and temperature monitoring devices. Humidity measurement tools you need to take total control of your critical environment.



Medical Furniture

➤ Automated dispensing systems streamline inventory and medication management, increase efficiency and help to ensure a better patient and caregiver experience. The automated dispensing system provides the perfect combination of security, simplicity, affordability and support for acute and specialty care facilities of all sizes.

- Mobility
- Integration & Power

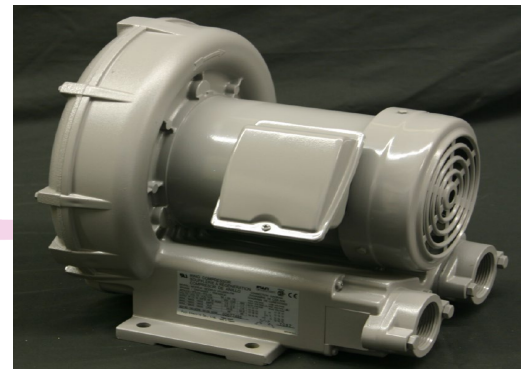


- Improve Patient Care
 - User-Driven
 - Ergonomic Design
 - Fully integrated Technology
 - Built in Mobility
 - Cleaner by Design
- Dynamic storage system flexible enough to meet the changing needs in today's health care industry .Modular furniture is easy to arrange later rearrange. Our System is designed with enclosures and interior components which are interchangeable among variety of cell sizes. And storage can be static when rail hung, or mobile when mounted on casters, dollies or other transport mechanisms. components can be assembled in different configurations for variety of applications
- Automated dispensing systems user interface is quickly leaned and easy to operate – saving time and allowing you to focus on patient care. The system secures both your medications and supplies and seamlessly integrates with virtually any HL7 complaint hospital information system, automatically capturing dispensing, usage and billing information
- Meets all HIPAA requirements and fully ODBC compliant. It can be used with Crustal Reports.

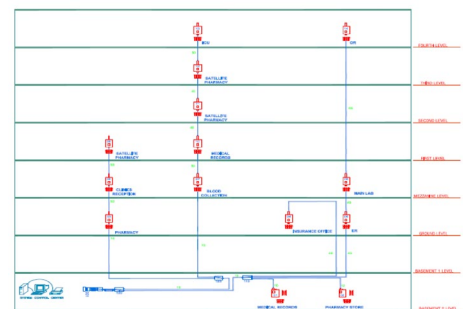


Pneumatic Tube System

- With complete programmer of easily operated and reliable pneumatic tube system, offer quick and safe transportation of documents, analysis samples, bank notes etc. Carrier or bags are used during transportation. Facilities can be connected to security cabinets or safes and are equipped with log printer and PC supervision. The system can easily be installed in old or new premises for increased security



- Our expert design offers a pneumatically controlled device system, requiring less electricity, a longer life expectancy and more reliability when compared to electric motors. With our air tube system, compressed air moves components through the tube from entry point to a landing destination, offering a fast, safe and low voltage option when it matters most. Air Link understands the sensitivity required to move glass bottles, IV bags, lab samples, blood and other medical goods




Nurse Call System

- Our nurse calls and care communication system based on LON® bus technology. It provides numerous call functions, direct communication options, different answer variants and interfaces to other electronic systems. These essential features of our system make care organizations more efficient while at the same time enhancing patient and personnel safety.
- Our System is developed for
Hospitals & Care organizations Sanatoriums and
rehabilitation clinics Retirement and nursing homes
Assisted living developments
Home care organizations
- The nursing home building code prescribes the installation of a nurse call system in all of the care organizations listed above. DIN/VDE 0834 defines the performance features of call systems in hospitals, retirement and old people's homes, nursing homes and prisons.



Lead Shielding

- We are also specialized in supply, installation and commissioning of lead Shielding and aprons for use in radiology environments. Our mission is to offer the very highest levels of radiation protection to our clients across world. We offer Lead Apron Repairs and associated products such as lead apron storage solution lead protective screens and shields, structural shielding, lead curtains and a host of associated products.
- 
- We supply Lead Aprons and associated X-Ray Shielding equipment directly from UK factory. Could provide full details of our extensive Radiology Products and Radiation Protective Products on request.
 - Lead Lined Drywall (also referred to as lead lined sheetrock or lead lined gypsum) is supplied with lead lining bonded to 1/2" or 5/8" drywall. Custom sizes for lead lined drywall are quoted upon request. We also provide lead lining bonded to specialty drywall such as moisture and mold resistant board. Lead Lined Drywall (lead lined sheetrock, lead lined gypsum wallboard) is supplied with 2" strips of the same lead thickness and height and 3/8" diameter lead discs.
 - Radiation Protection Products' Standard Lead Lined Door Frames consist of 16-gauge steel, a 2" face, and a 5-7/8" jamb depth.
 - These lead lined door frames are set up and welded and can accommodate up to 1/2" thick lead lining. Our Lead Lined Door Frames are shipped with steel stud anchors that can be attached to the lead lined door frame either by welding or with steel fasteners if the lead lining does not exceed 3/32" thick. We provide Sheet Lead with a consistent and high density manufactured from pure lead conforming to ASTM B-29, B-749 and Federal QQ-L-201F, QQ-L-171E.

We use only the purest lead available. Our sheet lead is 99.94% pure lead. Absolutely no refining is performed in the manufacturing of our sheet lead.



Health Care Disposables & Consumables

- Adult Diaper & Alcohol Prep Pad
- Auto Disable Syringe (Auto Disposable)
- Bandage Blood Transfusion Bag
- Cotton Swab (Cotton Applicator)
- Cotton Wool Roll & Cuvette
- Medical Thermometer & Gauze Roll
- Disposable Syringe & Gauze Ball
- Gauze Bandage / Elastic Bandage
- Gauze Swab (Gauze Pad) & Infusion Set



- IV Cannula & Lap Sponge
- Latex Examination Gloves (Latex Gloves)
- Latex Surgical Gloves (Latex Gloves)
- Medical Bag (Poly Bag) & Medical Cap
- Medical Face Mask & Syringe Needle
- Medical Spatula (Cervical Scraper)
- Nitrile Examination Gloves
- Nitrile Surgical Gloves (Nitrile Gloves)
- Plaster Bandage (Plaster of Paris Bandage)
- Scalp Vein Set & Shoe Cover
- Surgical Face Mask & Surgical Gown
- Surgical Suture & Swab, Tongue Depressor
- Under Pad (Bed Pad)
- Urinary Drainage Bag
- Vinyl Examination Gloves (Vinyl Gloves)



Clean Room Validation

Gleam has better experience service in clean room has just been built it must be tested to ensure that it is working correctly. The quantity and quality of air supplied, the air movement between and within the cleanroom, and the particle (where necessary microbiological) counts in the cleanroom should be shown to be correct. These requirements are laid down in the standards such as ISO-14644-1, 14644-2 &GMP

- Team of highly dedicated professionals with more than fifteen years of experience each are working exclusively for Pharmaceutical Industries (Cleanrooms) and very closely related industries,



- Pharmaceutical Production
- Biotech
- Medical Devices Manufacturing
- Hospitals
- Electronics Industries

Refractories, Fire Bricks & Fire Clay Etc.

Importing the Fire Bricks from India and Supplying in Qatar Market.

Products General Description and its used in Brief

Firebricks – heavy dense fire clay bricks

Firebricks may be called by various definitions. It depends on who works with them, names them too.

(fire brick = fire-clay brick = refractory brick = chamotte brick = fireplace brick = heat resistant brick = chimney brick = dense/heavy kiln brick (for building kilns) = industrial ceramic brick (heavy).)

Firebrick also called as fire clay brick. Nowadays they are called heavy and dense Firebricks but old masters still call them fire clay bricks just because they are made of simple fireclay (which actually is the most ordinary mud.) Fire clay can be easily located out in the nature but it must contain the right refractory properties, suitable content ratio of silica and alumina. Some shops call these bricks fireplace bricks. They are used for instance for building cooking chamber in wood fired ovens, for creating fireplaces, all sorts of fire boxes and wood heaters' lining, linings in a small or the hugest industrial furnaces, you name it. firebrick detailed photo Fire clay bricks are very heavy/dense having low porosity and even on various re-heating, and under continuous heat, they will last for very/very long time.

Some may confuse them with insulating lightweight firebricks; those are used in different applications.

Dense firebricks can be cut only with diamond wheel attached to high-speed handheld angle grinders, on an ordinary building brick saw or sliding drop saw for cutting bricks. Firebricks can be chopped in half easily by using brick chisel and a couple of hits with a heavier hammer. It is fun and quick but may you want to achieve precise nice cuts hire a trade machine or buy yourself at least small size grinder. Before cutting soak the brick in water by dipping it in a bucket of water or in a wheelbarrow if you had too many. Leave the bricks in that water for 5 minutes minimum. Firebricks dipped in water before cutting with diamond wheel. The cutting diamond wheel will last you for a long time if the firebricks are cut wet plus you will not breathe in any dust, and of course, cutting gets a lot easier and faster!

Our Clients

